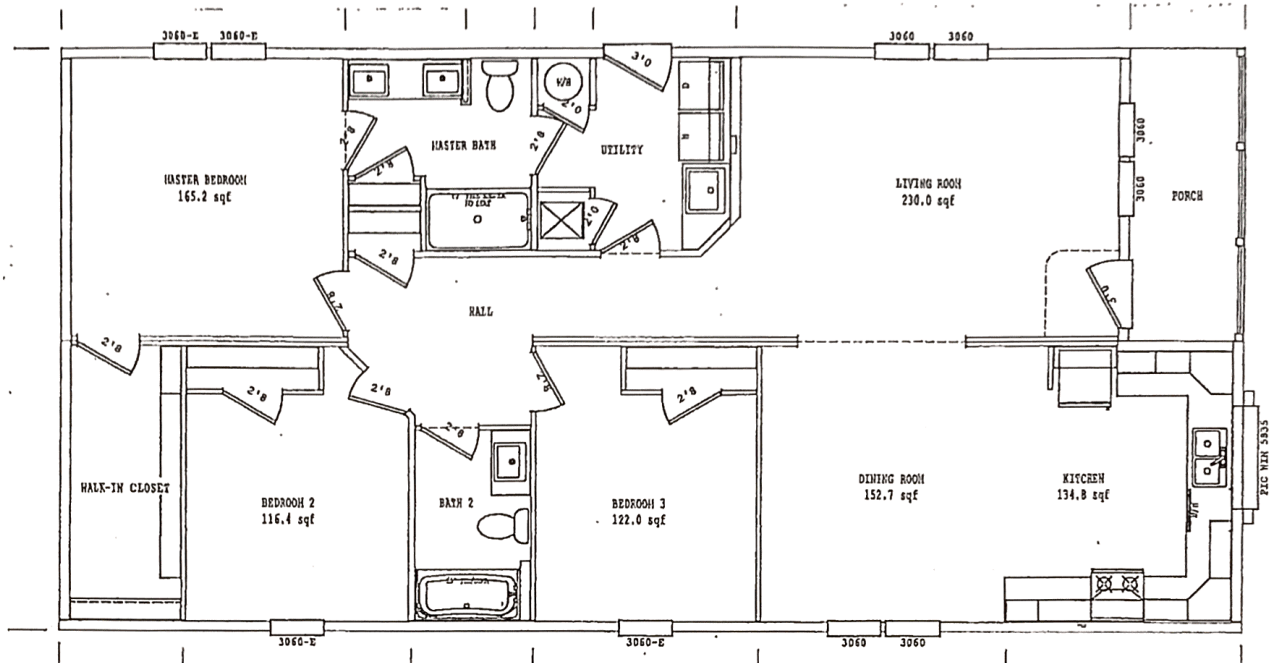


# HOMES OF HARMONY

## Schult Riverview Model 5628-210

Lot #15 3 BR 2 BA Sectional approx. 1,438 Sq Ft



R368212 Schult Built Home -- Redwood Falls MN

- Roof Pitch 5/12
- Porch w/Vinyl Post/Trim – White
- Drywall t/o
- 6 Door Kitchen Pantry
- Soft Close Drawers & Cabinets
- Theme Kitchen pkg Riverview
- Trim pkg upgraded Kaffe
- Recessed Cn lights Kitchen/DRm
- Shakers Box Bay Area- Granite Gray
- Vaulted Ceilings
- 3 ½" Lineal Windows & Frt Door
- Full length Structural Beam
- 8 Ft Interior Walls
- 2x8 Floor Joist
- Clayton Low-E Windows
- Exterior Front Doors 36" ¾ Oval, White
- Exterior Back Door 36" 6pnl Steel, White
- Interior Doors 6pnl, Kaffe
- Lg Utility Rm w/Exit Door
- Sink & Closet in Utility Rm
- Furnace Door 6pnl White
- Insulation: R22 Floor, R21 Wall, R50 Roof
- Intertherm Gas HI EFF Furnace
- Ventilare Sys III
- Perimeter Heat
- Fiberglass Heat Duct Sys
- Frigidaire Appliance Pkg, Black
- Elec Water Heater 40 gal. ,
- 200 Amp Elec Service
- 52" Hunter Fan LRm
- Water Meter Loop
- Exterior Water Faucet
- Bath #1
  - Sq Chinette Lav, dbl
  - Mirror o/each Sink
  - Walk-in Tiled Shower
  - Recessed Ceramic Shelf
  - Closet w/wire shelving
- Bath #2
  - Sq Chinette Lav
  - 60" Tub/Shower 1 pc
  - Mirror w/Seamed Edge