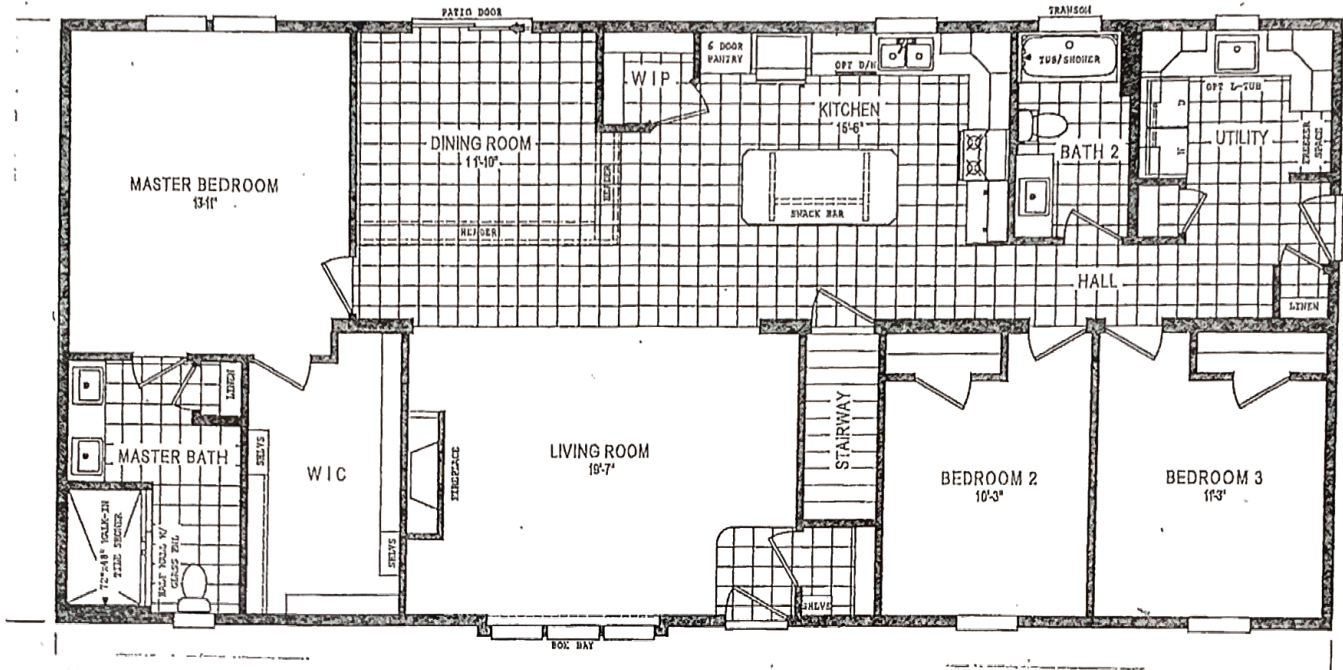


HOMES OF HARMONY

2019 Schult Integrity 6432-43

Lot #9 3 BR 2 BA - Modular approx 1,920 sq. ft.



R368067AB Schult Built Home, Redwood Falls, MN

- Full Hinge Dormer
- Roof Pitch 5/12
- 10' Over/hang
- Clayton Low-E Windows
- Walk-out Bay LR
- Lineal Windows & Frt Door 3 1/2"
- Solid Core 6pnl Doors, Kaffe
- Drywall t/o
- Gas Fireplace
- Vaulted Ceilings
- 8' Exterior Walls
- Frigidaire Appliance Pkg, black
- Kitchen back splash
- Kitchen Island w/ Pendants
- Walk-in Pantry
- 6' Patio Door off DR
- Lg Laundry Rm w/Exit door
- Laundry Rm Sink w/ctr top
- Freezer Space
- Insulation: R20 Floor, R21 Wall, R50 Roof
- 200 Amp Elec Service
- Phone/TV Jacks
- Bath #1
- Dbl Lav, sq
- Dbl LED Mirrors
- Walk-in Shower, Tiled
- Linen Closet
- Bath #2
- Chinette Lav, sq
- Tub/Shower 60" Fbrgls
- Recessed Med Cab
- Exterior Faucets & Elec Outlets